



# MODESTO SUBBASIN COMMUNICATION AND ENGAGEMENT PLAN

## PREPARED FOR:

Stanislaus and Tuolumne Rivers  
Groundwater Basin Association  
Groundwater Sustainability Agency and  
the Tuolumne County Groundwater  
Sustainability Agency

## PREPARED BY:

Stantec Consulting Services Inc.

**SEPTEMBER 2020**

## Executive Summary

The Modesto Subbasin Communication and Engagement Plan (Plan) provides a high-level overview of potential near- and long-term outreach strategies, tactics, and tools that support public and stakeholder communication actions, as required by the Sustainable Groundwater Management Act (SGMA) of 2014 and for consideration by the Stanislaus and Tuolumne Rivers Groundwater Basin Association Groundwater Sustainability Agency (STRGBA GSA). This Plan recognizes that one-size doesn't fit all and describes potential actions that may be implemented by the STRGBA GSA and Tuolumne County Groundwater Sustainability Agency (Tuolumne County GSA) to inform and engage stakeholders about development of the Groundwater Sustainability Plan (GSP), deliver clear and consistent messaging about SGMA, and comply with the SGMA outreach requirements. The potential outreach tools and activities identified in this document were informed by a Stakeholder Assessment conducted by the Modesto Subbasin GSAs in Spring 2020. Both the Stakeholder Assessment and this Plan were funded through a Facilitation Support Services grant (Implementation Service Plan no. 08, see **Attachment A**) from the California Department of Water Resources (DWR). Stantec developed these documents as part of the Implementation Service Plan tasks for the Modesto Subbasin.

## Outreach Tools

This Plan identifies several potential tools to support communication and engagement activities with stakeholders in the Modesto Subbasin. For the purposes of this Plan, stakeholders are defined as beneficial users of groundwater in the Subbasin or individuals or organizations with interest or stake in the management of water resources in the region. These tools include the following:

- **Project Website:** The STRGBA GSA member agencies have updated the STRGBA website ([www.strgba.org](http://www.strgba.org)) to provide information about SGMA and to house GSA meeting and outreach materials. The Tuolumne County GSA has added a SGMA-related page (<https://www.tuolumnecounty.ca.gov/1292/Sustainable-Groundwater-Management-Act-S>) to the Tuolumne County website. The page also links to the STRGBA website.
- **Interested Parties Database:** Pursuant to the requirements of SGMA, the Modesto Subbasin GSAs have developed and will maintain an Interested Party Database. The Database will be used to notify stakeholders of pending meetings and workshops, opportunities for public comment, and notices of other GSA outreach actions.
- **Newsletter:** The STRGBA GSA has developed and distributes a quarterly electronic newsletter to keep interested parties informed about progress in developing the GSP, opportunities for public engagement, and groundwater management issues or news of regional importance.
- **Informational Materials:** The Modesto Subbasin GSA will develop template outreach materials for each phase of the GSP development and implementation process. These materials may be translated as needed into Spanish or other languages, and may include informational fact sheets, template presentation slides, notices, and new releases.

### Outreach Activities

This Plan identifies a variety of potential outreach activities to provide opportunities for interested parties and stakeholders to stay informed and engaged in the development of the GSP. These potential outreach activities seek to build and expand public awareness of the Modesto Subbasin GSAs and SGMA and to actively engage key stakeholder groups to coordinate and collaborate on technical issues important for GSP development. Below is a summary of existing and potential additional outreach opportunities.

- **Public Meetings:** The primary way for members of the public to provide input on development of the GSP is by attending and providing public comment at regular STRGBA GSA GSP Coordination and Technical Advisory Committee meetings.
- **Member Agency Briefings:** GSA representatives or consultant staff may conduct periodic presentations to boards, councils, and commissions of the Modesto Subbasin GSAs' member agencies on an as-needed basis. These presentations are intended to provide updates on GSP progress and next steps and to respond to questions.
- **GSP Development Workshops:** In support of plan development, the Modesto Subbasin GSAs will periodically host public workshops aimed at educating members of the public about key GSP topics and to solicit input on technical content and draft GSP chapters. It is anticipated that up to five workshops will be held between Summer 2020 and Fall 2021.
- **Community Presentations:** The Modesto Subbasin GSAs may provide brief, high-level overviews of the GSP process and status at meetings hosted by various civic, nonprofit, and community groups in the Subbasin.
- **GSP Office Hours:** GSP office hours entail establishing a designated block of time when interested parties can talk to a GSA representative, ask questions, or provide input on draft GSP chapters in an informal setting. The GSA representative(s) hosting the office hours will record questions and feedback from participants. Questions and answers will be posted on the STRGBA GSA website..
- **Partnerships with Trusted Messengers:** The Modesto Subbasin GSAs may utilize partnerships with trusted messengers in the Subbasin to broaden the dissemination of SGMA information and connect with hard-to-reach stakeholder groups. This may include sending these organizations notices and informational materials for distribution to their stakeholders, cohosting events or workshops, and/or holding briefings with organization leadership.
- **Targeted Outreach:** The Modesto Subbasin GSAs may also conduct targeted outreach to specific stakeholder groups that may be underrepresented in other outreach activities or require targeted messaging or activities. This may include targeted outreach to tribes, agricultural water users, urban water users, disadvantaged communities, and watershed stewardship organizations.

## **Groundwater Sustainability Plan Comment Process Adoption Outreach**

The Modesto Subbasin GSAs will release draft GSP chapters for public review and comment as chapters are developed. Interested parties will be able to view draft chapters on the STRGBA GSA website and to submit comments remotely via email or in-person during public workshops. The draft chapters may be revised according to comments received during the respective comment periods.

It is currently envisioned that a complete Public Draft GSP will be released for public review in Fall 2021, for a 45-day public comment period. A summary of the comments received during this period will be attached to the Final GSP and posted on the STRGBA GSA website. The Final GSP will be adopted at a public hearing and then submitted to DWR no later than January 31, 2022.

*This page left blank intentionally.*

# Table of Contents

<b>1.0</b>	<b>INTRODUCTION .....</b>	<b>1-1</b>
1.1	About SGMA.....	1-1
1.1.1	GSP Emergency Regulations .....	1-1
1.2	About the Modesto Subbasin .....	1-2
1.3	About the Stanislaus and Tuolumne Rivers Groundwater Basin Association and Tuolumne County Groundwater Sustainability Agencies .....	1-2
1.4	About the Plan .....	1-3
<b>2.0</b>	<b>DECISION-MAKING PROCESS.....</b>	<b>2-1</b>
<b>3.0</b>	<b>BENEFICIAL USES AND USERS .....</b>	<b>3-1</b>
<b>4.0</b>	<b>COMMUNICATION AND ENGAGEMENT .....</b>	<b>4-1</b>
4.1	Stakeholder Assessment .....	4-1
4.1.1	Stakeholder Survey.....	4-1
4.1.2	Focus Groups .....	4-2
4.1.3	Stakeholder Assessment Findings .....	4-2
4.2	Outreach Tools .....	4-3
4.2.1	Website.....	4-3
4.2.2	Interested Parties Databases.....	4-3
4.2.3	Newsletter.....	4-4
4.2.4	Informational Materials.....	4-4
4.3	Outreach Activities .....	4-5
4.3.1	GSP Development Meetings.....	4-6
4.3.2	Member Agency Briefings.....	4-6
4.3.3	Public Workshops .....	4-6
4.3.4	Community Presentations .....	4-7
4.3.5	GSP Office Hours .....	4-8
4.3.6	Partnerships with Local Organizations .....	4-8
4.4	Targeted Stakeholder Outreach Tools and Activities.....	4-9
4.4.1	Tribes .....	4-9
4.4.2	Agricultural Water Users .....	4-9
4.4.3	Urban Water Users .....	4-10
4.4.4	Disadvantaged Communities .....	4-10
4.4.5	Watershed Stewardship Organizations .....	4-11
4.4.6	Government and Land-Use Agencies .....	4-12

## Contents

<b>5.0</b>	<b>SUMMARY OF ENGAGEMENT .....</b>	<b>5-1</b>
<b>6.0</b>	<b>PUBLIC ENGAGEMENT IN GSP ADOPTION .....</b>	<b>6-1</b>
6.1	Public Comment Process.....	6-1
6.2	Notice to Cities and Counties.....	6-2
6.3	Final GSP Adoption Process.....	6-2
<b>7.0</b>	<b>Public Engagement in GSP Implementation .....</b>	<b>7-1</b>
<b>8.0</b>	<b>INTER- AND INTRA-BASIN COORDINATION .....</b>	<b>8-1</b>

## List of Tables

Table 1.	GSP Development Workshops .....	4-7
Table 2.	Communities Designated as Disadvantaged in the Modesto Subbasin .....	4-11

## List of Figures

Figure 1.	Map of the Modesto Subbasin Groundwater Sustainability Agencies .....	1-3
-----------	---	-----

## Acronyms and Abbreviations

CASGEM	California Statewide Groundwater Elevation Monitoring
Plan	Communication and Engagement Plan
DWR	California Department of Water Resources
FSS	Facilitation Support Services
GSA	Groundwater Sustainability Agency
GSP	Groundwater Sustainability Plan
MHI	Median Household Income
MID	Modesto Irrigation District
Modesto Subbasin GSAs	Stanislaus and Tuolumne Rivers Groundwater Basin Association Groundwater Sustainability Agency and Tuolumne County Groundwater Sustainability Agency
MOU	Memorandum of Understanding
SGMA	Sustainable Groundwater Management Act of 2014
Stakeholder Assessment	Modesto Subbasin Stakeholder Assessment
STRGBA GSA	Stanislaus and Tuolumne Rivers Groundwater Basin Association Groundwater Sustainability Agency
Subbasin	Modesto Subbasin
Tuolumne County GSA	Tuolumne County Groundwater Sustainability Agency



*This page left blank intentionally.*

## 1.0 INTRODUCTION

### 1.1 About SGMA

The Sustainable Groundwater Management Act (SGMA) was signed into law by Governor Jerry Brown on September 16, 2014—three years after the start of California’s historic drought. The legislation requires local public agencies and newly formed Groundwater Sustainability Agencies (GSA) in high- and medium-priority subbasins to meet certain requirements for the long-term sustainable management of California’s groundwater resources. These requirements include the following:

- June 30, 2017: Establish GSAs (or equivalent) for all high- and medium-priority basins. (Water Code § 10724(b))
- July 1, 2017: County must affirm or disaffirm responsibility as GSA if no GSA has been established. (Water Code § 10724(b))
- Jan. 31, 2022: All non-critically overdrafted high- and medium-priority basins must be managed under a Groundwater Sustainability Plan (GSP). (Water Code § 10720.7(a)(1))
- On April 1, following GSP adoption and annually thereafter, GSAs will provide reports on progress towards sustainability to the California Department of Water Resources (DWR). (Water Code § 10728)

Oversight of these requirements is provided by DWR with potential intervention by the State Water Resources Control Board, if management activities are determined to be inadequate.

#### 1.1.1 GSP Emergency Regulations

Following the passage of SGMA, DWR embarked on a series of public and agency meetings to develop the GSP Emergency Regulations. These regulations were released in July of 2016 and are chaptered under the California Code of Regulations Title 23. Waters (§350-§358.4). In conjunction with the release of these regulations, DWR published the Groundwater Sustainability Plan Emergency Regulations Guide. This guide summarizes and defines the processes and requirements for GSA formation found in Title 23, the development and implementation of GSPs, the responsibilities of DWR (and by extension the State Water Resources Control Board), and inter-basin coordination (§357.2).

The Modesto Subbasin Communication and Engagement Plan (Plan) describes options available to the Modesto Subbasin GSAs’ as they seek to achieve the communication and engagement activities identified in the GSP Emergency Regulations and chaptered in California Code of Regulations Section 354.10:

*Each plan shall include a summary of information relating to notification and communication by the agency with other agencies and interested parties including the following:*

*(a) A description of the beneficial uses and users of groundwater in the basin, including the land uses and property interests potentially affected by the use of*

## INTRODUCTION

*groundwater in the basin, the types of parties representing those interests, and the nature of consultation with those parties.*

*(b) A list of public meetings at which the plan was discussed or considered by the agency.*

*(c) Comments regarding the plan received by the agency and a summary of any responses by the agency.*

*(d) A communication section of the plan that includes the following:*

*(1) An explanation of the agency's decision-making process.*

*(2) Identification of opportunities for public engagement and a discussion of how public input and response will be used.*

*(3) A description of how the agency encourages the active involvement of diverse social, cultural and economic elements of the population within the basin.*

### 1.2 About the Modesto Subbasin

There are a total of 515 groundwater subbasins in the State of California. The Modesto Subbasin (Subbasin) (DWR Bulletin 118 Basin Number 5-022.02) is primarily located within Stanislaus County with a portion in Tuolumne County. It is one of the 19 subbasins making up the greater San Joaquin Valley Basin. It is also one of the 94 subbasins that have been designated as high or medium priority by DWR's California Statewide Groundwater Elevation Monitoring (known as CASGEM) program. With CASGEM data and analysis, DWR has classified the Modesto Subbasin as a high-priority, non-critically overdrafted subbasin. This classification requires the GSAs in the Subbasin to submit a GSP to DWR no later than January 31, 2022.

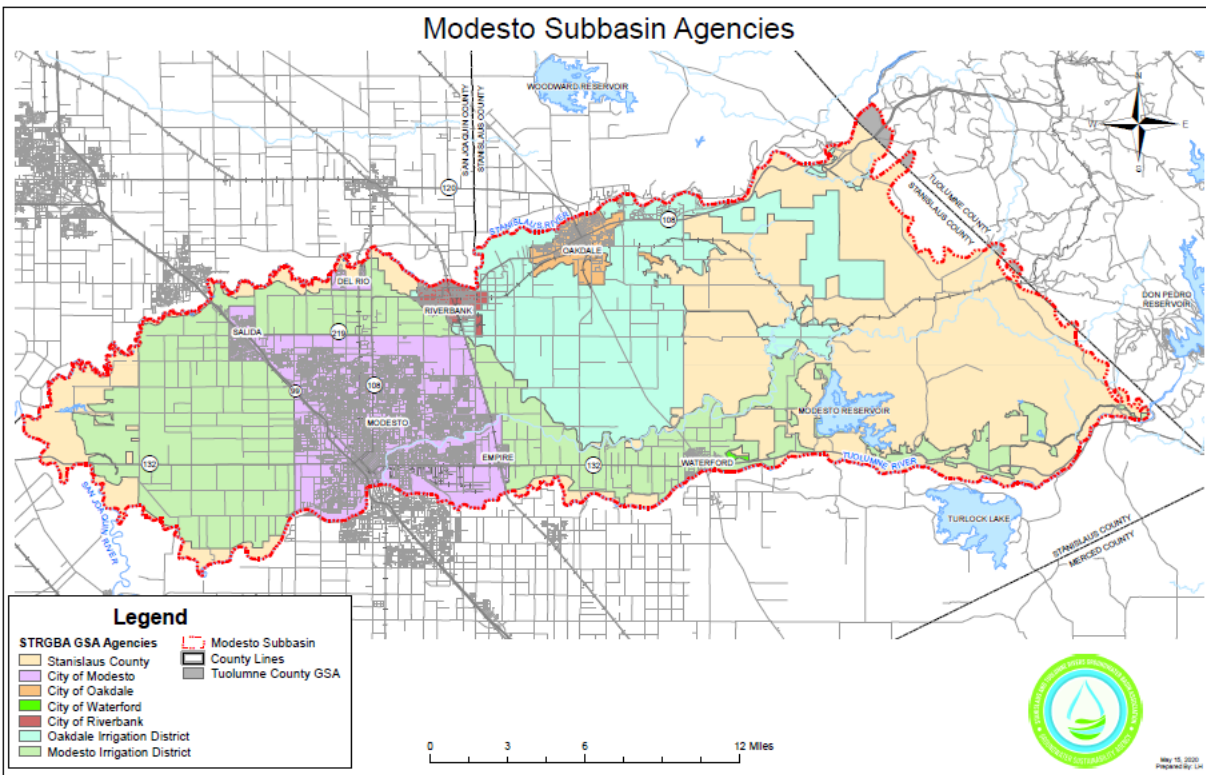
### 1.3 About the Stanislaus and Tuolumne Rivers Groundwater Basin Association and Tuolumne County Groundwater Sustainability Agencies

The Stanislaus and Tuolumne Rivers Groundwater Basin Association Groundwater Sustainability Agency (STRGBA GSA) and the Tuolumne County Groundwater Sustainability Agency (Tuolumne County GSA) (collectively known herein as the Modesto Subbasin GSAs) have formed in response to the regulations set forth by SGMA. They are working cooperatively to develop a single GSP for the Modesto Subbasin, conduct general and targeted outreach communication and engagement activities, and to maintain groundwater sustainability in the Subbasin through the use of proven sustainable groundwater management actions.

STRGBA was formed under a Memorandum of Understanding (MOU) in April of 1994 to provide a forum for coordinated planning and management activities for the Modesto Subbasin. Initially, the MOU was between six entities in the Subbasin: City of Modesto, Modesto Irrigation District (MID), City of Oakdale, Oakdale Irrigation District (OID), City of Riverbank, and Stanislaus County. In 2015, the MOU was revised to add the City of Waterford. Each of these entities are eligible to serve as an independent GSA, pursuant to Water Code §10721(n). The STRGBA member agencies passed resolutions to amend the existing MOU to officially form the singular STRGBA GSA in compliance with SGMA on May 29, 2017.

Tuolumne County formed a GSA on May 16, 2017, to cover the portion of the Modesto Subbasin within the County's jurisdiction and not covered by an existing GSA. The Tuolumne County GSA represents an area of approximately 1,000 acres, primarily located in the northern part of the Subbasin. This area is a fraction of one percent of the 247,000-acre Subbasin. Therefore, the Tuolumne County GSA is cooperating in the Modesto Subbasin GSP process through a coordination agreement with Stanislaus County, included as **Attachment B** to this Plan. As a STRGBA GSA member agency, Stanislaus County is participating in the GSP process on behalf of the Tuolumne County GSA.

**Figure 1** shows the boundaries of the Modesto Subbasin and illustrates how the Modesto Subbasin GSAs collectively cover the entirety of the Subbasin.



**Figure 1. Map of the Modesto Subbasin Groundwater Sustainability Agencies**

## 1.4 About the Plan

This Plan was developed by Stantec in coordination with the Modesto Subbasin GSAs, with funding provided by DWR's SGMA Facilitation Support Services (FSS) program. It provides a roadmap of potential communication and engagement activities that will support members of the Modesto Subbasin GSAs, as well as technical and other consultant staff, with GSP development, adoption, and implementation efforts. The purpose of the Plan is to provide options that may aid them as they work to: (1) meet the regulatory requirements of SGMA, (2) support the GSP development processes (technical, policy, and others, as applicable), and (3) accomplish the communication and engagement objectives specific to the members of the Modesto Subbasin GSAs.

## **INTRODUCTION**

Every chapter of this Plan begins with the California Water Code or California Code of Regulations section(s) identifying the applicable requirements for public outreach and engagement under SGMA. Introduction of these requirements serve as a reminder of the regulatory and statutory requirements of SGMA, and they initiate content development for incorporation in the Modesto Subbasin GSP.

## 2.0 DECISION-MAKING PROCESS

### Legal Requirements:

**§354.10 (d)** A communication section of the Plan that includes the following:

- 1) An explanation of the Agency's decision-making process.

The STRGBA GSA has taken the responsibility for overseeing development of a GSP for the Modesto Subbasin, and it serves as the administrative body for public outreach and GSP implementation on behalf of the member agencies, consistent with the MOU and the coordination agreement with the Tuolumne County GSA. Working collectively, the Modesto Subbasin GSAs will agree on an outreach approach. They are coordinating on all Subbasin-wide outreach implementation efforts and activities. The Modesto Subbasin GSAs are also consulting and coordinating, both individually and collectively as a group, with community organizations and nonprofits to support or implement outreach efforts and activities.

Pursuant to the SGMA regulation §354.10 (d), the Modesto Subbasin GSP will include a description of the GSAs' decision-making process, which will include their governance structure. Consistent with the adopted MOU, administrative and plan-development activities of STRGBA GSA have been delegated to representatives of the member agencies by their locally elected officers. These representatives will be used to solicit input, plan public outreach activities, make key decisions, and to achieve adoption of the GSP.

*This page left blank intentionally.*

### 3.0 BENEFICIAL USES AND USERS

#### Legal Requirements:

**§354.10** Each plan shall include a summary of information relating to notification and communication by the Agency with other agencies and interested parties including the following:

- (1) A description of the beneficial uses and users of groundwater in the basin, including the land uses and property interests potentially affected by the use of groundwater in the basin, the types of parties representing those interests, and the nature of consultation with those parties.

SGMA requires that each GSP include a description of beneficial uses and users of groundwater in the Subbasin, and to describe the nature of consultation with those parties. California Water Code §10723.2 identifies beneficial user types, including:

- Agricultural well owners
- Domestic well owners
- Municipal well operators
- Public water systems
- Local land-use planning agencies
- Environmental users of groundwater
- Surface water users
- Federal government
- California Native American tribes
- Disadvantaged communities (DAC)
- Groundwater elevation monitoring entities

As part of its initial GSA formation notification, the Modesto Subbasin GSAs provided a preliminary list of beneficial users within their jurisdiction and described potential actions to engage those users. These actions centered around leveraging existing relationships with stakeholders in the Subbasin. Stakeholders identified in the initial notification included:

- Agricultural water users, particularly small individual landowners that rely on groundwater for agriculture
- Domestic well owners
- Improvement districts and other special districts that own or maintain water infrastructure



## BENEFICIAL USES AND USERS

- Land-use planning agencies, including the Stanislaus Local Agency Formation Commission
- Riparian water users
- Environmental groups, including state and federal regulatory agencies
- Federal agencies, including the US Geologic Survey, US Fish and Wildlife Service, and US Army Corps and Engineers
- DACs

This Plan identifies recommended tools and activities to engage and consult each of these beneficial users in development of the GSP for the Subbasin. In some cases, these beneficial users will be consulted through the general public and stakeholder outreach activities identified in **Section 4.3**. In other cases, targeted outreach activities may be needed, and targeted stakeholder outreach activities are described in **Section 4.4**.

## 4.0 COMMUNICATION AND ENGAGEMENT

Legal Requirements:

§354.10 (d)

- (2) Identification of opportunities for public engagement and a discussion of how public input and response will be used.
- (3) A description of how the Agency encourages the active involvement of diverse social, cultural, and economic elements of population within the basin.
- (4) The method the Agency shall follow to inform the public about progress implementing the Plan, including the status of projects and actions.

Consistent with SGMA, the Modesto Subbasin GSAs intend to develop and implement their GSP in close coordination with the public and stakeholders through various outreach tools and activities. These notifications serve as the foundation for consistent and progressive engagement with diverse social, cultural, and economic stakeholder communities within the jurisdictional boundaries of the Subbasin.

Communication and engagement activities described in this section include tools, activities, and strategies tailored to the unique needs of the stakeholders within the Subbasin. These tools and activities have either already been initiated/completed, are currently in progress, or may be scheduled to be initiated/completed on an as-needed basis. They draw from results of the Modesto Subbasin Stakeholder Assessment, further described below, and are framed to establish and maintain stakeholders' awareness and understanding of SGMA, the Modesto Subbasin GSAs, and the GSP development process.

### 4.1 Stakeholder Assessment

The Modesto Subbasin Stakeholder Assessment (Stakeholder Assessment) was conducted by Stantec (outreach consultant) on behalf of the Modesto Subbasin GSAs. The purpose of the Stakeholder Assessment was to evaluate stakeholders' knowledge of SGMA and groundwater management practices in the Modesto Subbasin, and to establish goals and strategies for public outreach, communication, and engagement to achieve SGMA compliance. Stantec conducted the Stakeholder Assessment in two parts: an online stakeholder survey and a series of focus group interviews. This section describes each of these parts and summarizes the key Stakeholder Assessment findings.

#### 4.1.1 Stakeholder Survey

The first part of the Stakeholder Assessment was an online stakeholder survey conducted by the STRGBA GSA to assess stakeholders' understanding and perspectives on key SGMA topics and groundwater conditions in the Subbasin. The STRGBA GSA sent out the survey in Spring 2019 and promoted it through its website and member agencies' email lists and websites. The survey was made available for more than one year. In total, 161 individuals took the survey. Of those 161 survey participants, 35 were agricultural water users and 73 were

## COMMUNICATION AND ENGAGEMENT

municipal water users. The remaining participants identified as private well users, government agency workers, non-government organizations, academia, or “other.”

### 4.1.2 Focus Groups

The second part of the Stakeholder Assessment was a series of focus group interviews with stakeholders that were identified by the STRGBA GSA member agencies. The purpose of the focus groups was to gain deeper insights into preliminary findings from the survey and gather additional information on preferred methods for public outreach in the Subbasin. STRGBA GSA representatives identified 27 stakeholders as candidates to participate in the focus groups. Due to participants’ scheduling constraints, Stantec ultimately conducted interviews with 15 stakeholders representing the following STRGBA GSA member agencies: City of Modesto, City of Riverbank, MID, OID, and Stanislaus County.

Stantec conducted five focus groups in April and March 2020. Each focus group was comprised of one to four stakeholders. Stakeholders were grouped by the STRGBA GSA member agency jurisdiction in which they work or reside. The STRGBA GSA representatives were invited, but not required, to attend the focus group for their agency to act as a listener. The interviews were originally intended to be conducted in-person; however, due to shelter-in-place orders and other directives in response to COVID-19, all interviews were conducted via conference call.

Prior to each interview, the focus group participants were required to fill out a pre-meeting questionnaire and take the online stakeholder survey. Stantec compared the survey results from each interview participant to that of the other interviewees in their group, as well as to those of other survey participants. The results of this analysis were a key discussion topic during the focus groups. The other discussion topics included expectations for and barriers to the GSP development process, priorities for water use in the Subbasin, projects and actions to manage groundwater, funding for SGMA implementation, and activities and communication channels for stakeholder outreach. The Stantec facilitator recorded the responses from focus group participants, and these notes were distributed to the participants for review following each focus group.

### 4.1.3 Stakeholder Assessment Findings

Stantec staff collated and analyzed the results of the stakeholder survey and focus groups interviews to identify common trends and deviations between the survey and focus group results. The results of this analysis were summarized in a series of presentation slides. Stantec staff presented the Stakeholder Assessment findings summary at a STRGBA GSA GSP Coordination meeting on June 10, 2020. Key findings from the Stakeholder Assessment include the following:

- Agricultural and municipal waters users in the Subbasin have differing opinions on how groundwater should be managed and who should pay for management actions and projects.
- Members of the general public have low interest in SGMA.
- SGMA is not perceived to be a broad threat to water users in the Subbasin.

- Stakeholders are most concerned about the costs and potential financial burden of implementing SGMA.

The Stakeholder Assessment findings serve as the basis for many of the selected outreach tools and activities recommended in this Plan. It is important to note that the Stakeholder Assessment was based on a statistically small sample size and some of the results may not represent the opinion of the majority of stakeholders in the Subbasin. For some issues, assessment findings were contrary to the common understanding of the Modesto GSAs representatives. For example, the focus group participants, who were primarily agricultural water users, stated that they felt fees for groundwater projects and management actions should be paid by all water users. However, some of the Modesto Subbasin GSAs representatives felt that a majority of their stakeholders preferred fees assessed on groundwater users only. Therefore, this Plan reflects both the findings from the Stakeholder Assessment as well as discussions with the GSAs representatives and best practices for stakeholder engagement in groundwater sustainability planning.

## 4.2 Outreach Tools

This section describes the suite of tools the Modesto Subbasin GSAs have developed, plan to develop, or may develop to disseminate information to the public and engage stakeholders in development of the GSP. The Modesto Subbasin GSAs intend to, on an as-needed basis, translate materials in Spanish or other languages to reach alternative-language communities. For unity, a common visual identity will be used for all printed and electronic information materials intended for public and stakeholder audiences.

### 4.2.1 Website

The Modesto Subbasin GSAs have developed websites to keep stakeholders and other interested parties informed of GSP development and implementation activities. The STRGBA GSA website (<http://www.strgba.org>) includes copies of informational, technical, and planning documents; STRGBA GSA meeting agendas and materials; information on the Modesto Subbasin; and member-agency contact information. In addition, the STRGBA GSA has and intends to continue to post draft GSP chapters on its website for public review and comment.

The Tuolumne County GSA has added a web page specific to SGMA on the Tuolumne County website (<https://www.tuolumnecounty.ca.gov/1292/Sustainable-Groundwater-Management-Act-S>). The page offers information for Tuolumne County residents residing in the Subbasin, and provides a link to the STRGBA GSA website.

### 4.2.2 Interested Parties Databases

California Water Code §10723.8 requires GSAs to “establish and maintain a list of persons interested in receiving notices regarding plan preparation, meeting announcements, and availability of draft plans, maps, and other relevant documents.” Pursuant to this requirement, the Modesto Subbasin GSAs have each developed an Interested Parties Database. An Interested Parties Database is a list of individuals, organizations, or agencies that have expressed interest in being informed about the GSAs’ activities and development of the GSP. The Modesto Subbasin GSAs use their Interested Parties Databases as the primary contact lists for public meetings, workshops, and announcements related to SGMA implementation in the Modesto Subbasin. Interested parties can self-select to be added to the Interested Parties

## COMMUNICATION AND ENGAGEMENT

Databases by filling out a form on the STRGBA GSA or Tuolumne County GSA websites or contacting their local GSA representative.

### 4.2.3 Newsletter

The STRGBA GSA has developed an electronic newsletter to keep interested parties informed about GSP development activities, upcoming opportunities for public engagement, and news alerts on statewide issues of importance to SGMA. Each newsletter is typically one to two pages in length and distributed electronically through an email to the Interested Parties Databases on a quarterly basis. Copies of the newsletter are also made available on the STRGBA GSA website.

### 4.2.4 Informational Materials

The Modesto Subbasin GSAs intend to develop a suite of informational materials aimed at educating members of the public and stakeholders about key SGMA topics, and for keeping interested parties informed about GSP development and implementation. These materials can be used to bridge information gaps between agricultural and municipal water users, regarding SGMA and groundwater conditions in the Modesto Subbasin. The Modesto Subbasin GSAs intend to adapt the materials over time as the GSP is completed, adopted, and implemented; and may have the materials translated into Spanish and other languages on an as-needed basis to reach alternative-language communities. As such, these documents are fit-for-purpose outreach tools that include the following:

#### *Fact Sheets*

The Modesto Subbasin GSAs may develop a suite of informational fact sheets aimed at educating members of the public about SGMA and key topics identified in the GSP. The purpose of the fact sheets is to prepare interested parties to provide meaningful input on the GSP and to encourage engagement at public meetings and workshops. Fact sheet topics may include the following:

- **SGMA 101:** Aimed at a general audience, this fact sheet provides an introductory-level overview of SGMA, the Modesto Subbasin, the Modesto Subbasin GSAs, and the GSP development process.
- **Groundwater Conditions:** This fact sheet educates stakeholders about historical and current groundwater conditions in the Modesto Subbasin, including groundwater supply, storage, and quality.
- **Water Budget:** This fact sheet explains a water budget, water budget inputs/outputs, and how the water budget will be used as part of the GSP.
- **Sustainable Management Criteria:** This fact sheet defines key terms related to sustainable management criteria, including minimum thresholds and measurable objectives, and describe how the sustainable management criteria will be used to manage groundwater conditions in the Subbasin.
- **Overview of the Modesto Subbasin GSP:** This fact sheet provides an overview of each chapter of the GSP, and then describes the GSP public comment and adoption process.

The fact sheets can be distributed through postings on websites and/or distributing them electronically or via hard copy through existing communication channels.

#### *Presentation Slides*

The Modesto Subbasin GSAs have developed a set of template presentation slides aimed at educating members of the general public about SGMA, the Modesto Subbasin, and the GSAs' governance structure. These slides help ensure consistent messaging and reinforce a cohesive visual identity that unifies materials across the Subbasin.

These slides may be adapted for use at public meetings, workshops, and presentations to community groups or agency decision-making bodies (e.g., boards or city councils).

#### *Notices*

The Modesto Subbasin GSAs may develop fliers, email text, social media posts, and other types of notices to promote public meetings, workshops, and other opportunities for public involvement. The Modesto Subbasin GSAs will distribute these notices to the Interested Parties Databases, customers and constituents of the member agencies, and other stakeholders. The materials may be distributed via email, by posting on websites and social media accounts, and/or delivered by hard-copy mailings.

The GSAs may also periodically develop template email, social media posts, and/or website text to promote public comment periods and educate members of the public on key SGMA topics. To the extent possible, these posts will be scheduled to align with other public outreach events (e.g., National Groundwater Awareness Week, Public Works Week).

#### *News Releases*

The Modesto Subbasin GSAs may develop news releases aimed at informing the media about upcoming public events and GSP development milestones, including the release of public documents.

### **4.3 Outreach Activities**

The Modesto Subbasin GSAs may conduct and monitor a variety of public outreach activities to inform, engage, and respond to stakeholders and other interested parties during GSP development, adoption, and later, implementation. These activities serve to engage and interact with the public and stakeholders during GSP development, and to assist GSA staff and leadership in collecting information important to groundwater sustainability planning. This engagement and interaction will occur through six primary activities: regular GSP development meetings, member agency briefings, public workshops, community presentations, GSP office hours, and partnerships with local organizations in the Subbasin. Each of these activities are further described below.

Most of these activities will be promoted through similar outreach tactics, including sending an email to the Interested Parties Databases, posting on the Modesto Subbasin GSAs' websites, and adding updates about them to the STRGBA GSA newsletter. In addition, some activities may require other tactics to target specific stakeholder groups. The activities identified in this section are assumed to be promoted by these standard tactics, unless otherwise noted in the activity description.

## COMMUNICATION AND ENGAGEMENT

In response to social-distancing and local health ordinances resulting from the COVID-19 pandemic, the Modesto Subbasin GSAs are prepared to adapt these activities to virtual or other distance-engagement formats. The GSAs will utilize online collaboration platforms and implement best practices for virtual engagement. In addition, the GSAs may relay information and materials through trusted organizations and existing communication channels in the Subbasin, to keep stakeholders—who may not have access to the technical equipment required to engage—virtually informed.

### 4.3.1 GSP Development Meetings

The primary way for members of the public to provide input on development of the GSP is by attending and providing public comment at standing public meetings of the Modesto Subbasin GSAs. The STRGBA GSA holds monthly meetings and bi-monthly Technical Advisory Committee meetings. Both of these meetings include GSP development updates and discussions and are open for the public to attend and provide comment. These meetings are also open to stakeholders from the Tuolumne County GSA and include participation from a Tuolumne County GSA representative. The meetings' calendar and associated materials are available on the STRGBA GSA website. The meetings are additionally noticed by emails to the Interested Parties Databases.

### 4.3.2 Member Agency Briefings

Representatives for the Modesto Subbasin GSAs, or consultant staff, regularly brief member agency councils and boards on the status of GSP development and upcoming outreach activities. These briefings are conducted during member agencies' publicly noticed meetings, which include opportunities for public comment. The primary purpose of these briefings is to update the member agencies' governing bodies on GSP progress and next steps, and to respond to questions. These presentations also provide opportunities to share and describe how elements of the GSP apply to the service area of the respective member agency. The frequency of member agency briefings varies by the agency and GSP development process phase.

In addition to regular briefings throughout development of the GSP, the Modesto Subbasin GSAs may also brief each of the member agencies during the public review and comment process for the Public Draft GSP. This public comment process is further described in **Section 6.0**, below.

### 4.3.3 Public Workshops

Public workshops are another venue to educate the public about SGMA, collect feedback on results of technical analyses, and solicit input on the content of the draft GSP chapters. **Table 2**, below, identifies the anticipated schedule, topics, and desired outcomes for the GSP development workshops for the Subbasin.

**Table 1. GSP Development Workshops**

<b>Tentative Date</b>	<b>Topics</b>	<b>Desired Outcome(s)</b>
Summer 2020	<ul style="list-style-type: none"> <li>• Introduction to SGMA</li> <li>• Modesto Subbasin</li> <li>• Modesto Subbasin GSAs</li> <li>• GSP Development Process</li> </ul>	<ul style="list-style-type: none"> <li>• Educate the public about SGMA and identify how interested parties can engage in the GSP development process.</li> </ul>
Fall 2020	<ul style="list-style-type: none"> <li>• Groundwater Conditions</li> <li>• Introduction to Water Budgets</li> </ul>	<ul style="list-style-type: none"> <li>• Educate stakeholders on current and projected groundwater conditions in the Modesto Subbasin.</li> <li>• Provide an overview of purpose and components of water budgets to prepare stakeholders to participate in the next workshop.</li> </ul>
Winter 2020	<ul style="list-style-type: none"> <li>• Water Budgets</li> <li>• Introduction to Sustainable Management Criteria</li> </ul>	<ul style="list-style-type: none"> <li>• Receive feedback on the drafted past, current, and future water budgets for the Modesto Subbasin.</li> <li>• Provide an overview of the key components of sustainable management criteria to prepare stakeholders to participate in the next workshop.</li> </ul>
Spring 2021	<ul style="list-style-type: none"> <li>• Sustainable Management Criteria</li> <li>• Groundwater Monitoring</li> </ul>	<ul style="list-style-type: none"> <li>• Receive feedback on the draft minimum thresholds and measurable objectives for the Modesto Subbasin.</li> <li>• Describe the groundwater monitoring network.</li> </ul>
Fall 2021	<ul style="list-style-type: none"> <li>• Public Draft GSP</li> </ul>	<ul style="list-style-type: none"> <li>• Provide a forum for stakeholders and interested parties to discuss comments on the Public Draft GSP.</li> </ul>

Key:

GSA = Groundwater Sustainability Agency

GSP = Groundwater Sustainability Plan

SGMA = Sustainable Groundwater Management Act

The format of each workshop will be adapted according to the workshop content, feedback from stakeholders, and changing conditions in the Subbasin. During periods when state and local ordinances limit or prohibit in-person gatherings, workshops may be held using virtual collaboration platforms (e.g., Zoom, GoToMeeting/GoToWebinar, Microsoft Teams). The Modesto Subbasin GSAs intend to record both the virtual and in-person workshops and post the recordings on STRGBA GSA's website and YouTube page for public viewing. This tactic allows those unable to attend—either due to scheduling conflicts or health and safety concerns—to have the ability to stay informed about GSP development.

#### **4.3.4 Community Presentations**

The Modesto Subbasin GSAs may conduct presentations to existing civic, nonprofit and other community organizations to build and maintain awareness about SGMA, encourage participation at public meetings and workshops, and to encourage self-selection into the Interested Parties Databases. Representatives from the Modesto Subbasin GSAs will conduct the presentations. Presenters will be encouraged to use the template presentation slides and other informational materials to ensure consistent messaging and branding.



## COMMUNICATION AND ENGAGEMENT

Should these presentations take place and in the early stages, the Modesto Subbasin GSAs intend to focus on building awareness and partnerships with local organizations and agencies identified during the Stakeholder Assessment as potential “partner agencies.” Subsequent presentations may be provided upon request by organizations or stakeholder groups. The presentations will be tracked in the Communications Plan Database, described in **Section 5.0**, below.

### 4.3.5 GSP Office Hours

The Modesto Subbasin GSAs may hold periodic GSP office hours to answer questions on the draft GSP chapters and to promote dialogue between stakeholders and GSA representatives. Office hours’ activities are typically informal and do not have a specific agenda or discussion topic. Instead, the discussion topics are driven by questions from the participants. Participants will be notified of GSP office hours through the standard outreach tactics, as well as via messaging to local community groups as necessary.

Office hours may be held in-person or virtually utilizing an online collaboration platform. The Modesto Subbasin GSAs will select a designated time frame for the office hours; interested parties can join at any time during this period. One or more representatives from the GSAs will be available during the entirety of the office hours period to answer questions. Once an interested party joins, he or she may ask any questions related to SGMA or the GSP. The GSA representative(s) will record the question, and respond. GSA representatives intend to summarize the questions received and comments during the office hours for the other members of the GSA and technical consultant staff during regular GSP development or Technical Advisory Committee meetings.

### 4.3.6 Partnerships with Local Organizations

The Modesto Subbasin GSAs may partner with local community and industry organizations to broaden the dissemination of SGMA information and connect with stakeholder groups. Participants in the Stakeholder Assessment identified the following active organizations in the Subbasin:

- Almond Alliance of California
- Manufacturers Council of the Central Valley
- Stanislaus County Farm Bureau
- Tuolumne County Farm Bureau
- Western United Dairies

The Modesto Subbasin GSAs may identify additional potential partner organizations during GSP development. The Modesto Subbasin GSAs already maintain relationships with many of these organizations and intend to keep them informed throughout GSP development and implementation through personal communications or one-on-one meetings. The Modesto Subbasin GSAs may also ask partner agencies to distribute notices and materials to their stakeholders and offer to cohost events, workshops, and GSP office hours.

## 4.4 Targeted Stakeholder Outreach Tools and Activities

In addition to general public outreach, the Modesto Subbasin GSAs may also conduct outreach to targeted stakeholder groups that may be underrepresented in public-involvement activities or that benefit from targeted messaging or engagement.

### 4.4.1 Tribes

No tribes were identified in the list of beneficial users included in the STRGBA GSA initial notification. However, the STRGBA GSA may consider filling a Sacred Lands File & Native American Contacts List Request with the Native American Heritage Commission to determine whether a tribe has indicated sacred land or traditional/cultural resources interest within the Modesto Subbasin. If tribes are identified, STRGBA member agencies would convene to discuss engagement options consistent with applicable regulatory requirements and existing tribal consultation processes or agreement(s).

The Tuolumne County GSA's initial notification listed two tribes with potential interests in their region: the Tuolumne-Band of the Me-Wuk Indians and the Chicken Ranch Rancheria Band of the Me-Wuk Indians of California. The Tuolumne County GSA will consult with these tribes to identify and consider their interests.

### 4.4.2 Agricultural Water Users

Agriculture plays a vital role in both the economy and the social fabric of the Subbasin, and groundwater resources are essential to maintaining this industry. Engaging agricultural water users will be key to the success of the GSP. The elected boards and councils of Modesto Subbasin GSAs provide broad agricultural representation. MID and OID already conduct outreach on groundwater management practices and SGMA to their agricultural customers. MID holds annual grower meetings before the start of irrigation season; publishes a bi-annual newsletter (The Irrigator) for their irrigation customers; and provides a water report, which includes highlights of GSA activities, at MID Board of Directors' meetings. In addition, MID maintains a website, which includes a page specifically on water supply management, and active social media accounts (Facebook, Twitter, and YouTube). OID staff provide regular updates and periodic presentations at public OID Board of Directors meetings, publish a regular newsletter, and included SGMA updates on OID's website. MID and OID intend to incorporate SGMA messaging into these ongoing communication activities to keep agricultural water users informed about the GSP development process.

In addition, the Modesto Subbasin GSAs may conduct targeted outreach to agricultural water users in the *non-districted* areas of the Subbasin. A non-districted area is an area where private well owners/operators are represented under SGMA by the county of record, often in absence of a municipality, irrigation district, water district, or other special district eligible to serve as a local public agency under California Water Code §10723(n). Most of the non-districted areas are in the eastern, unincorporated portion of the Subbasin where groundwater is commonly used for both agricultural and domestic water supplies. There are approximately 75,000 acres of non-districted land in the eastern subbasin. A portion of this area is being represented by Water & Land Solutions, a consulting firm hired to represent local landowners' interests in GSP development for the Subbasin. The Modesto Subbasin GSAs are working with Water & Land Solutions to gather data and engage with stakeholders in the region he represents. In addition, Stanislaus and Tuolumne Counties intend to develop a database of landowners in all non-

## COMMUNICATION AND ENGAGEMENT

districted areas and to engage those landowners through direct mailings, targeted webinars/meetings, and in partnership with local community and industry organizations.

### 4.4.3 Urban Water Users

A key finding from the Stakeholder Assessment focus groups was that water users in urban areas of the Subbasin were perceived to have less interest in participating in the GSP development process than agricultural water users or water users in rural areas. This finding was supported by the results from the stakeholder survey that indicated that municipal water users (who often live in urban areas) generally have less of an understanding of SGMA than agricultural water users.

To bridge this knowledge gap, and to encourage engagement with urban water users, the Modesto Subbasin GSAs may conduct targeted outreach in urban areas. These activities may include developing fact sheets on groundwater use and conditions in the Modesto Subbasin and distributing these materials through existing communication channels and community gathering locations (e.g., libraries, community centers, civic centers); providing presentations on SGMA to local civic and community organizations; and inviting community leaders to GSP office hours. Each of these activities is further described in **Section 4.3**, above. In addition, the GSAs may develop key messages on the importance of groundwater to the local economy and environment, and to incorporate these messages in all informational materials and talking points.

### 4.4.4 Disadvantaged Communities

California Code of Regulations §79505.5(a) defines a *disadvantaged community* as a “community with an annual median household income (MHI) that is less than 80 percent of the statewide annual median household income.” The American Community Survey of the US Census Bureau provides a dataset that can be used as a source to estimate a community’s MHI. According to 2012–2016 American Community Survey 5-Year Estimates, California’s statewide MHI is \$63,783. Thus, a community with an MHI less than or equal to \$51,026 is considered disadvantaged.

The Modesto Subbasin GSAs’ boundaries include three census-designated places considered disadvantaged by the state: Empire, Airport, and West Modesto. These communities are also identified in DWR’s DAC Mapping Tool. The MHI for each is identified in **Table 3** below. All three of these communities are located within and receive water from the City of Modesto. Therefore, they will be represented by the City of Modesto during the groundwater sustainability planning process.

**Table 2. Communities Designated as Disadvantaged in the Modesto Subbasin**

<b>Census-Designated Place</b>	<b>Median Household Income<sup>1</sup></b>
Airport	\$ 29,868
City of Modesto	\$ 50,996
City of Waterford	\$ 49,500
Empire	\$ 35,519
Rouse	\$ 33,292
West Modesto	\$ 30,682

Notes:

<sup>1</sup> Median Household Income is based on 2014–2018 American Community Survey 5-Year Estimates

Individuals living in communities state-designated disadvantaged face unique challenges when it comes to participating in public planning processes. This may include physical and/or linguistic barriers which may impede their ability to provide input on plans or regulations that impact them. The Modesto Subbasin GSAs intend to use best practices to help address barriers these communities may face in participating in the GSP development and implementation processes. These may include translating materials and fliers into multiple languages, offering interpreting services at public workshops and meetings, holding workshops and meetings at familiar and trusted locations (e.g., schools, community centers, churches), and ensuring workshops/meetings are held at times accessible by a wide range of people. (Note that due to social-distancing and local health ordinances resulting from the COVID-19 pandemic, many of the subbasin’s outreach activities are being adapted to virtual engagement formats.)

The Modesto Subbasin GSAs may also partner with local community advocates or organizations to educate community members about SGMA and to encourage involvement in public events. Often leveraging the communication channels of these trusted messengers is a more effective means of reaching DACs than traditional communication methods.

#### **4.4.5 Watershed Stewardship Organizations**

GSAs are obligated to consider the potential impact of sustainable groundwater management activities on groundwater-dependent ecosystems. These considerations may range from monitoring activities to steps to preserve and expand these natural resources. Stewardship of these resources has primarily been led through a combination of regulatory and nonprofit organizations. In the Subbasin, the Tuolumne River Trust—an advocacy group representing the Tuolumne River—is actively involved in water-management planning activities. Other organizations may include The Nature Conservancy, Stanislaus Audubon Society Chapter, and others. These organizations represent sources of valuable input on the subject matter of groundwater-dependent ecosystems that are being considered during GSP development.

The Modesto Subbasin GSAs may engage leadership from these groups throughout the groundwater sustainability planning process for discussion of environmental water needs and groundwater-dependent ecosystems. These meetings may include participation from other watershed stewardship organizations in the Subbasin. In addition, interested stewardship organizations may also request briefings with the Modesto Subbasin GSAs and participate in the outreach activities described in **Section 4.3**, above.

### 4.4.6 Government and Land-Use Agencies

The Modesto Subbasin GSAs may engage local and regional governmental and land-use agencies early and throughout the GSP development process. This may include presentations or meetings with local planning commissions, local agency formation commissions, and housing authorities (e.g., Housing Authority of City of Riverbank, Stanislaus Regional Housing Authority). In addition, local cities and counties will receive notice at least 90-days prior to adoption of the Final GSP, as described in **Section 6.2**.

## 5.0 SUMMARY OF ENGAGEMENT

### Legal Requirements:

**§354.10** Each plan shall include a summary of information relating to notification and communication by the Agency with other agencies and interested parties including the following:

- A list of public meetings at which the Plan was discussed or considered by the Agency.

SGMA requires that GSAs include a list of public meetings at which the GSP was discussed or considered by an agency. To fulfill this requirement, and to follow best practices for outreach and communication, each GSA should develop a tool or database to track all SGMA-related outreach conducted by the agency.

Modesto Subbasin GSAs have developed the Communications Plan Database to track all SGMA public and stakeholder engagement activities and to identify potential organizations, individuals, and media contacts where outreach was sent. Within the database, stakeholders are placed into three tiers, based on the stakeholders' level of interest and current and potential uses of groundwater: (1) Tier A, (2) Tier B, or (3) Tier C.

The database is currently in an electronic (Microsoft Excel) format. The database may be posted on a platform accessible by member agencies (e.g., SharePoint, DropBox) to allow agency staff to update it as outreach is conducted. However, a single individual should be identified to ensure the database is kept current and properly maintained. A copy of the Communications Plan Database will be attached to the Final GSP to demonstrate the Modesto Subbasin GSAs' efforts to involve members of the public in GSP development and to comply with California Code of Regulations §354.10.

## SUMMARY OF ENGAGEMENT

*This page left blank intentionally.*

## 6.0 PUBLIC ENGAGEMENT IN GSP ADOPTION

Legal Requirements:

**§354.10** Each plan shall include a summary of information relating to notification and communication by the Agency with other agencies and interested parties including the following:

- (c) Comments regarding the Plan received by the Agency and a summary of any responses by the Agency.

**§10728.4**

- (2) A groundwater sustainability agency may adopt or amend a groundwater sustainability plan after a public hearing, held at least 90 days after providing notice to a city or county within the area of the proposed plan or amendment. The groundwater sustainability agency shall review and consider comments from any city or county that receives notice pursuant to this section and shall consult with a city or county that requests consultation within 30 days of receipt of the notice.

This chapter describes requirements and approaches for collecting and summarizing comments on the Draft GSP and required steps necessary, prior to GSP adoption.

### 6.1 Public Comment Process

California Code of Regulations §354.10 states that each GSP must include a summary of comments received regarding the GSP and a summary of any responses that resulted from the GSA. However, the SGMA regulations do not provide a prescriptive public review process or comment period for the Public Draft GSP. After the Final GSP is submitted to DWR, the agency will post the GSP to its website and hold a public comment period. Pursuant to California Code of Regulations §353.8(b), the minimum period for public comment is 60 days. However, DWR intends to open the comment period for 75 days or more.

The Modesto Subbasin GSAs intend to release the Draft GSP chapters for public review and comment as the chapters are developed. Chapters will be released individually or in groups in a phased or serial review process. The Modesto Subbasin GSAs intend to post the drafts on the STRGBA GSA website for review and to collect comments through a designated project email address, direct mail, or at public workshops and meetings. Interested parties will have a designated time (e.g., 30 days) to review the draft chapters and submit comments. Comments received during the comment period will be reviewed by the Modesto Subbasin GSAs and consultant staff. In addition, the Modesto Subbasin GSAs intend to provide a summary of comments received and intends to post on the STRGBA GSA website.

Once all the draft chapters have been released and revised, the Modesto Subbasin GSAs intend to issue a complete Public Draft GSP for further public review and comment. The Public Draft GSP will be released for a 45-day public comment period in Fall 2021. Public comments will be collected via direct mail and email. In addition, the Modesto Subbasin GSAs intend to



## **PUBLIC ENGAGEMENT IN GSP ADOPTION**

hold a special STRGBA GSA GSP development meeting and possibly GSP office hours to answer stakeholder questions.

The Modesto Subbasin GSAs intend to summarize comments received during this 45-day period and to present them in a GSP Public Comment Summary attached to the Final GSP. The GSP Public Comment Summary will describe the public comment process, summarize the major themes or topics that individuals submitted comments on, and will include copies of written comments. In addition, any comments that raise substantive technical or policy issues may be addressed in the Final GSP text.

### **6.2 Notice to Cities and Counties**

California Water Code §10728.4 states that a GSA must provide notice to any cities or counties within the GSP area at least 90-days prior to adopting or amending a GSP at a public meeting. The cities and counties have 30 days upon receipt of the notice to request consultation on the plan. Pursuant to these requirements, the Modesto Subbasin GSAs will develop and distribute a notice to cities and counties within the Subbasin during the Public Draft GSP public comment period, no later than 90 days before the first scheduled GSP adoption hearing.

The notice will provide an overview of SGMA and the GSAs; identify where the Public Draft GSP can be viewed, or copies can be obtained; identify the time, date, and location for the adoption public hearing(s); and describe the method for agencies to submit consultation requests. A single point of contact should be identified in the notice; however, requests for consultation should be collectively reviewed by Modesto Subbasin GSAs and a collective response should be developed and distributed to the consulting agencies. Cities and counties will have 30-days to respond to the notice.

### **6.3 Final GSP Adoption Process**

Following the 30-day consultation request period, if no cities or counties have requested consultation, the Final GSP will be adopted at a series of public hearings. Each of the STRGBA GSA member agencies will adopt the Final GSP at a public hearing held by each agency's governing body. The Tuolumne County GSA will adopt the Final GSP at a public hearing held by the Tuolumne County Board of Supervisors. These hearings may be held as part of the agencies' standard public meetings, or at a special meeting of the governing body. Notices for the public hearings will follow all applicable local, state, and federal regulations regarding meeting noticing practices that apply.

At this time, it is not anticipated that fees would be adopted with the Final GSP. However, if fees are associated with adoption of the Final GSP, then additional public meeting notices will be required pursuant to Government Code §6066.

## 7.0 PUBLIC ENGAGEMENT IN GSP IMPLEMENTATION

### Legal Requirements:

#### §354.10 (d)

- (2) The method the Agency shall follow to inform the public about progress implementing the Plan, including the status of projects and actions.

*Note: This section will be revised and expanded upon next year, depending upon the implementation identified in the Draft GSP.*

As part of its GSP, the Modesto Subbasin GSAs must describe how they plan to inform the public about progress in implementing the GSP. GSP implementation outreach activities should build upon activities conducted during GSP development. Successful activities should be continued throughout GSP implementation and then updated to include new stakeholder groups and prevailing issues.

The primary methods to inform the public about progress of the GSP include posting on the websites for STRGBA GSA, Tuolumne County GSA, and member agencies; sending out progress information to the Interested Parties Databases; and holding regular public meetings focused on GSP implementation. In addition, the Modesto Subbasin GSAs may choose to continue other general public outreach activities, such as GSP office hours, community presentations, and the newsletter. Informational materials and website content will be updated at key implementation milestones (e.g., annual reporting periods, Five-Year Updates) to reflect the status of the GSP and Subbasin conditions. In addition, new materials will be developed to help the public understand next steps and how they can stay engaged in GSP implementation.

*This page left blank intentionally.*

## 8.0 INTER- AND INTRA-BASIN COORDINATION

### Legal Requirements:

#### **§ 357.2.** Inter-basin Agreements

Two or more Agencies may enter into an agreement to establish compatible sustainability goals and understanding regarding fundamental elements of the Plans of each Agency as they relate to sustainable groundwater management.

The Modesto Subbasin is surrounded by the Turlock Subbasin to the south, Eastern San Joaquin Subbasin to the north, and Delta-Mendota Subbasin to the west. It is bounded to the east by the Sierra Nevada Foothills. Many Modesto Subbasin GSAs' member agencies are also members of one or more GSAs in these and other subbasins. SGMA does not require a formal inter-basin coordination agreement; however, per California Code of Regulations §357.2, Modesto Subbasin GSAs' member agencies may choose to establish a voluntary agreement with GSAs or the Plan Manager in adjacent subbasins to address basin-boundary flow and other issues. These agreements often reflect the technical and governance issues most central to management of the regions' groundwater resources. GSAs and Plan Managers in some regions have established an inter-basin coordination committee or working group to discuss these types of issues. These groups often meet semi-annually or quarterly and include representation from each of the subbasins in the region.

As critically-overdrafted basins, two adjacent subbasins, Eastern San Joaquin Subbasin and Delta-Mendota Subbasin, submitted their GSPs to DWR in January 2020. The Modesto Subbasin GSAs may coordinate efforts with GSAs in these subbasins through semi-annual inter-basin coordination meetings focused on discussing inter-basin boundary flows and other regional issues of concern. These meetings also serve to share lessons learned from the GSP development and implementation process between the critically overdrafted and non-critically overdrafted subbasins. At least one of these meetings will be planned and hosted by the GSAs in the Delta-Mendota Subbasin, as part of their FSS grant to support inter-basin coordination.

The Turlock Subbasin is on the same GSP-submission schedule as the Modesto Subbasin, and it also shares the same groundwater model. In addition, some member agencies of the STRGBA GSA also serve communities in the Turlock Subbasin. Accordingly, the Modesto Subbasin GSAs are coordinating more frequently with the GSAs in the Turlock Subbasin. The Modesto Subbasin and Turlock Subbasin GSAs have already held inter-basin coordination meetings focused on ensuring consistent analyses along the shared Tuolumne River boundary, and plan to continue holding these meeting moving forward. In addition, the GSAs in the subbasins intend to coordinate outreach efforts to stakeholders near the Modesto-Turlock Subbasins boundary. This may include developing and distributing joint notices and newsletters to landowners in this region, cohosting workshops or events, or cohosting GSP office hours focused on inter-basin coordination and Tuolumne River flows.

*This page left blank intentionally.*

Modesto Subbasin  
June 2020 GSP Development Workshop Summary

**MODESTO SUBBASIN  
JUNE 2020 GSP DEVELOPMENT WORKSHOP SUMMARY**

**Monday, June 1, 2020 (2:30 p.m. – 4:00 p.m.)**  
**Webinar**

**ATTENDEES**

<b>Name</b>	<b>Agency</b>
Miguel Alvarez	City of Modesto*
Jim Alves	City of Modesto*
John Brichetto	Brichetto Farms
Christine Campbell	G3 Enterprises
Luke Castle	Condor Earth
Aluriel Ceballos	Opportunity Stanislaus
Khandriale Clark	Stantec
Kathleen Danicourt	TCOS
John Davids**	Modesto Irrigation District*
Peter Drekmeier	Tuolumne River Trust
Gordon Enas	Modesto Irrigation District*
Dana Ferreira	Modesto Irrigation District*
Bill Fogarty	N/A
Stu Gilman	Modesto Irrigation District*
Stacy Henderson	Terpstra Henderson
Mary Ann Henriques	N/A
Lindsay Hofsteen	N/A
Gordon Hollingsworth	N/A
Chase Hurley	Water & Land Solutions
Bill Jackson	V A Rodden
Eric Kappmeier	Modesto Irrigation District*
Matthew Kinzie	Modesto Irrigation District*
Kim MacFarlane	Tuolumne County*
Jim Mortensen	N/A
Craig Moyle	Stantec
Tony Ott	Carl Ott & Sons Dairy
Marisa Pascoal	GEI
Kirsten Pringle**	Stantec
Michael Renfrow	City of Oakdale
Michael Riddell	City of Riverbank
Herb Smart	Turlock Irrigation District
Phyllis Stanin**	Todd Groundwater
Alexis Stevens	Somach Simmons & Dunn
Matthew Toste	Woolf Enterprises
Eric Thorburn**	Oakdale Irrigation District*
Luis Uribe	City of Riverbank*
Nick Waelty	N/A

Modesto Subbasin  
June 2020 GSP Development Workshop Summary

Name	Agency
Walter Ward**	Stanislaus County*
Kevin Weber	Fisher Nut Co
Melissa Williams	Modesto Irrigation District*
Ruben Willmarth	N/A
Terry Withrow	Stanislaus County
Jennifer Wright	Modesto Irrigation District*

\* indicates that agency is a member agency of the Stanislaus and Tuolumne Rivers Groundwater Basin Association Groundwater Sustainability Agency or Tuolumne County Groundwater Sustainability Agency

\*\* indicates that individual was one of the workshop speakers

## WORKSHOP SUMMARY

The Stanislaus and Tuolumne Rivers Groundwater Basin Association Groundwater Sustainability Agency (STRBGA GSA) and Tuolumne County Groundwater Sustainability Agency (Tuolumne County GSA) held a coordinated, virtual public workshop on June 1, 2020 from 2:30 p.m. – 4:00 pm. This was the first in a series of public workshops aimed at educating and soliciting input from members of the public about key topics related to development of a Groundwater Sustainability Plan (GSP) for the Modesto Subbasin. The purpose of the June workshop was to educate stakeholders and interested parties about the Sustainable Groundwater Management Act and GSP development process and identify opportunities for public input in this process.

The workshop was held virtually using an online webinar platform. In total, 51 individuals registered for the workshop and 39 individuals attended. The workshop was promoted through postings on the GSAs and member agencies' websites and social media accounts and an email to the Modesto Subbasin interested parties database. In addition, the Modesto Subbasin GSAs partnered with local organizations and industry associations to distribute the workshop information.

The workshop included a series of short presentations from GSA representatives and consultant staff. Speakers included John Davids, Modesto Irrigation District; Walter Ward, Stanislaus County; Eric Thorburn, Oakdale Irrigation District; Phyllis Stanin, Todd Groundwater; and Kirsten Pringle, Stantec. Ms. Pringle also serve as the workshop facilitator. Workshop topics included: introduction to SGMA, the STRGBA and Tuolumne County GSAs, the GSP development process, status of the Modesto Subbasin GSP, next steps, and how to get involved in the GSP development process.

The GSAs held question and answer session following each presentation. Participants could submit questions using the webinar platform or by texting the facilitator. Participants were given the option to have their question read out loud by the facilitator or read the question to the panelists themselves. A summary of the questions asked by workshop participants is provided below.

Following the workshop, a link to the recording of the webinar and copies of the workshops slides and handout were posted on the Modesto Subbasin GSAs' websites. In addition, Spanish-English bilingual copies of the slides and handout were also posted.

Modesto Subbasin  
June 2020 GSP Development Workshop Summary

**WORKSHOP FEEDBACK**

Workshop participants asked the following questions:

- John Brichetto, Brichetto Farms, asked: Who is creating this groundwater overdraft problem? The irrigation districts actually help the underground water and are net contributors to the groundwater, correct? Will the districts get credit for actually adding water to the underground?
- Peter Drekmeier, Tuolumne River Trust, asked: What do we know about the interconnectivity of groundwater and the Tuolumne River?
- Stacy Henderson, Terpstra Henderson, asked: Have all of the monitoring wells been installed using the grant funding received to date? If not, will the model and water budget be updated after they are installed?
- Tony Ott, Carl Ott & Sons Dairy, asked: Will additional storage be allowed by the state to meet goals?
- Alexis Stevens, Somach Simmons & Dunn, asked: If storage project are identified as necessary, who will pay for them? How will that be decided/determined?
- Luis Uribe, City of Riverbank, asked: What info do you use to prepare for the Water Budget?



## MODESTO SUBBASIN OFFICE HOURS #1

**Thursday, March 25, 2021 (12:00 p.m. – 1:00 p.m.)  
Virtual Meeting (Zoom)**

### ATTENDEES

Name	Agency
Lisa	Barton Ranch
Miguel Alvarez	City of Modesto*
Michael Renfrow	City of Oakdale*
Claudia Hidahl	Member of the public
Hilary	Member of the public
Louie B.	Member of the public
John Beckman	Member of the public
Mike Day	Member of the public
Tom Orvis	Member of the public
Gordon Enas	Modesto Irrigation District*
Jennifer Wright	Modesto Irrigation District*
John Davids	Modesto Irrigation District*
Melissa Williams	Modesto Irrigation District*
Samantha Wookey	Modesto Irrigation District*
Stu Gilman	Modesto Irrigation District (Board of Directors)*
Eric Thorburn	Oakdale Irrigation District*
Alexis Stevens	Somach, Simmons & Dunn
Khandriale Clark	Stantec*
Kirsten Pringle	Stantec*
Stacy Henderson	Terpstra Henderson

\* This indicates that the agency is a member agency of the Stanislaus and Tuolumne Rivers Groundwater Basin Association Groundwater Sustainability Agency, Tuolumne County Groundwater Sustainability Agency, or consultant staff.

Key: N/A = No Answer/Not Applicable

### PURPOSE AND FORMAT

In March 2021, the Stanislaus and Tuolumne Rivers Groundwater Basin Association (STRGBA) Groundwater Sustainability Agency (GSA) held the first in a series of basin Office Hours. Office Hours are a public engagement activity focused on soliciting questions from and engaging in informal dialogue with members of the public about key topics related to implementation of the Sustainable Groundwater Management Act and the Groundwater Sustainability Plan (GSP) being developed for the Modesto Subbasin.

The first Office Hours was held on March 25, 2021 from 12:00 p.m. – 1:00 p.m. via Zoom. In total, 9 individuals attended, apart from GSA and consultant staff (see the attendee list above for more details). The activity was promoted using a bilingual (English-Spanish) flyer that was distributed via the STRGBA GSA's website and social media accounts and an email to the Modesto Subbasin interested parties database.

The Office Hours topics were dictated through questions posed by members of the public. A summary of the questions and responses is provided below. Participants could submit questions verbally or using the chat function within webinar platform. The discussion was not recorded to promote an open dialogue with the attendees. At the request of the attendees, future Office Hours will be recorded and recordings made publicly available to allow those unable to attend to listen to the discussion.

## **SUMMARY OF FEEDBACK**

The following is a summary of attendee questions and GSA representative responses from the first Office Hours. The questions are organized by the topics or themes that they address.

### *Projects and Management Actions*

Mike Day, member of the public, noted the importance of flood irrigation to recharge groundwater. He asked if there would be an incentive for growers to use surface irrigation and whether individuals would be able to continue to flood for recharge purposes. John Davids, Modesto Irrigation District, acknowledged the conversion from flood irrigation to drip irrigation in the region and responded that the GSA may consider how to use old flood infrastructure for recharge purposes. Gordon Enas, Modesto Irrigation District, added that the STRGBA GSA will be discussing potential projects and management actions at the next several GSA and Technical Advisory Committee meetings.

Hilary, member of the public, asked when the GSA anticipated that the projects and management actions would be identified. Mr. Enas responded that he anticipated that a complete list of groundwater management projects and actions would be available in June.

### *GSP Implementation Funding and Financing*

Stu Gilman, Modesto Irrigation District Board of Directors, expressed concerns over the possibility of the GSA charging irrigators for additional expenses related to fees or maintenance not within the Modesto Irrigation District's jurisdiction. Mr. Davids responded that the GSAs are working on developing a fee schedule and anticipates there may be a base fee across the basin with some variations in different locations. He added that the matter had not yet been decided upon and would continue to be discussed.

Mr. Day asked what process the GSAs would be using to ensure that costs for projects and management actions are allocated fairly across the basin. He stated that certain costs should be allocated to the areas that are causing the overdraft or undesirable results. Mr. Davids responded that the first step is defining the extent of the issue that projects and actions need to address and then look at the projected costs to implement those projects and actions. He noted that discussions around the cost allocation model will occur in a public setting.

*Other Topics*

Stacy Henderson, Terpstra Henderson, asked whether the new monitoring wells would be owned by the STRGBA GSA and what would be the cost to monitor and maintain the wells. Mr. Enas responded that ownership of the monitoring wells would likely reside with the STRGBA GSA and that costs for well operation and maintenance would be identified in the STRGBA GSA budget for Fiscal Year 2022. Ms. Henderson asked when the budget would be developed and whether it would be developed in a public meeting. Mr. Enas responded that the budget would be developed in June. Mr. Davids, the member agencies will be discussing the fee structure to pay for implementation costs at public meetings.

Mr. Day stated that landowners were concerned about groundwater dependent ecosystems (GDE) and asked whether the GSAs would be 'ground truthing' the GDE information provided in the California Department of Water Resources' GDE dataset. Mr. Enas responded that the STRGBA GSA has not yet collected additional data on GDEs, but understood that one of the neighboring subbasins had and that the STRGBA GSA would look into it.

Lisa, Barton Ranch, asked what percentage of the basin's water supply was out of balance, particularly in the northeastern region, when the basin is projected it to be in balance, and how GSAs plan to achieve balance. Mr. Enas responded that the final current and projected water budgets have not been developed, but the technical consultants from Todd Groundwater would respond during the next Technical Advisory Committee meeting and follow up with that attendee directly. Mr. Enas and Miguel Alvarez, City of Modesto, added that the historic water budgets have been completed and those results are available on the meetings page (specifically for the October 22, 2020 meeting) of the STRGBA GSA's website.

Ms. Henderson asked whether the GSAs were able to get data from landowners in the white area of the eastern portion of the basin and what the GSAs' plans were to fill data gaps in that region. Mr. Enas responded that the basin's technical consultants were unsuccessful in getting information from landowners in the eastern portion of the basin and were forced to push forward with data collection and modeling efforts. Mr. Davids added that the GSAs will continue to work to get additional data from across the basin, but particularly data on wells in the eastern portion of the basin pumping under the Corcoran Clay. He encouraged the participants to stay engaged to be part of the ongoing data collection efforts.

**MODESTO SUBBASIN  
OFFICE HOURS #2  
Friday, May 28, 2021 (12:00 p.m. – 1:00 p.m.)  
Virtual Meeting (Zoom)**

**ATTENDEES**

<b>Name</b>	<b>Agency</b>
Miguel Alvarez	City of Modesto*
Michael Renfrow	City of Oakdale*
Allison and Dave Boucher	Members of the public
Louie Brichetto	Member of the public
Brad Johnson	Member of the public
Dennis Wakefield	Member of the public
Gordon Enas	Modesto Irrigation District*
John Davids	Modesto Irrigation District*
Melissa Williams	Modesto Irrigation District*
Samantha Wookey	Modesto Irrigation District*
Eric Thorburn	Oakdale Irrigation District*
Walt Ward	Stanislaus County*
Khandria Clark	Stantec*
Kirsten Pringle	Stantec*
Phyllis Stanin	Todd Groundwater*

\* This indicates that the agency is a member agency of the Stanislaus and Tuolumne Rivers Groundwater Basin Association Groundwater Sustainability Agency, Tuolumne County Groundwater Sustainability Agency, or consultant staff.

**PURPOSE AND FORMAT**

In May 2021, the Stanislaus and Tuolumne Rivers Groundwater Basin Association (STRGBA) Groundwater Sustainability Agency (GSA) held the second in a series of basin Office Hours. Office Hours are a public engagement activity focused on soliciting questions from and engaging in informal dialogue with members of the public about key topics related to implementation of the Sustainable Groundwater Management Act and the Groundwater Sustainability Plan (GSP) being developed for the Modesto Subbasin.

The second Office Hours was held on May 28, 2021 from 12:00 p.m. – 1:00 p.m. via Zoom. In total, four individuals attended, apart from GSA and consultant staff (see the attendee list above for more details). The activity was promoted using a bilingual (English and Spanish) flyer that was distributed via the STRGBA GSA's website and social media accounts and an email to the Modesto Subbasin interested parties database.

STRGBA GSA and consultant staff provided a presentation on Sustainable Management Criteria (SMC) and the GSP, which was followed by a live question and answer session with STRGBA GSA member agency representatives. Participants could submit questions verbally or using the chat function within the Zoom platform. A summary of the questions and responses is provided below. A recording of the Office Hours was also made publicly available and posted on the STRGBA website.

## SUMMARY OF FEEDBACK

The following is a summary of attendee questions and GSA representative responses from the second Office Hours. The questions and responses are organized by the topic that they address.

### *Projects and Management Actions and Associated Costs*

Brad Johnson, member of the public, asked if the offline, high nitrate city wells could be helpful for areas with lower groundwater levels. Phyllis Stanin, Todd Groundwater, responded that water from high nitrate wells cannot be consumed as drinking water but could be used for a potential project to manage the basin's groundwater levels. She noted that several wells have gone offline in the City of Modesto. Eric Thorburn, Oakdale Irrigation District (OID), added that the City of Oakdale, which is within OID's jurisdiction, has had a few, isolated incidents involving nitrates and noted that the East San Joaquin Water Quality Coalition is making efforts to tackle the nitrate issue.

Allison and Dave Boucher, members of the public, asked if any fees for GSP implementation have been set for landowners. Mr. Thorburn responded that the GSAs have not yet discussed or set fees for GSP implementation. He anticipated that the GSAs would discuss the funding plan for GSP implementation after the SMC are developed and the projects and management actions are selected. He stated that GSP development efforts are being covered by a grant so there isn't additional funding needed until the GSAs start implementing the GSP. Michael Renfrow, City of Oakdale, added that the City is looking at potential grants to mitigate the costs of implementing projects and management actions in its area.

Dennis Wakefield, member of the public, asked what was the likelihood that the GSAs will implement limits on pumping before the 2042 deadline for basin sustainability and interim five-year milestone. Mr. Thorburn responded that the GSAs have not established pumping limits at this time. He explained that the Subbasin is in a state of non-critical overdraft and most the overdraft is occurring in the eastern part of the basin. The GSAs have their first interim milestone five years after the initial submittal of the GSP; at that point, the GSAs will reevaluate the data available to them as well as conditions in the basin to determine whether pumping limitations will be needed.

### *Sustainable Management Criteria*

Kirsten Pringle, the Office Hours moderator, asked the GSA representatives to elaborate on the draft sustainability goal for the Subbasin. Mr. Thorburn explained that the basin's sustainability goal was developed to ensure that the GSP is flexible. He explained that the STRGBA GSA has already identified a host of priority issues that the GSP will address. After finding and implementing solutions to those issues, the GSAs will continue to monitor the Subbasin conditions and adapt to any changing conditions, as needed.

Ms. Pringle asked how the SMC would be used to manage the Modesto Subbasin. Mr. Thorburn responded that the GSAs will continue to closely monitor the basin conditions in order to avoid the exceedance of minimum thresholds identified in the GSP. If a minimum threshold is exceeded, the GSAs will adapt the projects and management actions to bring the basin into sustainability.

Ms. Pringle asked what would happen if a groundwater conditions exceeded the minimum threshold. Ms. Stanin responded that the GSAs will adapt the projects and management actions and monitoring network to the groundwater conditions. She stated that there are numerous wells located throughout the Modesto Subbasin that the STRGBA GSA has access to, including wells from the California Department of Water

Resources (DWR) California Statewide Groundwater Elevation Monitoring (CASGEM) program, the City of Modesto, and the United States Geological Survey. All of these together comprise a relatively robust monitoring program that the GSAs will use to help inform the GSP and its future iterations.

Ms. Pringle asked the GSA representatives to identify the next steps in the GSP and SMC development process. Mr. Thorburn stated that the GSAs have developed the groundwater model and created the water budgets; the next step is to set up a monitoring network and create an approach for the SMCs using all of the information that has been gathered.

*Other*

Ms. And Mr. Boucher asked how severe the overdraft is in the eastern portion of the Subbasin. Mr. Thorburn responded that there is 43,000 acre-feet of overdraft on average. Ms. Stanin added that most of that 43,000 acre-feet is in the eastern non-districted areas of the Subbasin and the GSAs are working on developing a sustainable yield analysis for that area. The GSAs are also working on projecting changes in the groundwater system and evaluating what the GSAs can try to do to bring some areas back into sustainability. Mr. Renfrow noted that the GSAs are evaluating projects that could help tackle the overdraft .

Ms. Pringle asked how the public could get involved in the SMC and GSP development process. Mr. Thorburn stated that the best ways for interested members of the public to get involved are to attend the monthly GSA meetings, visit the GSAs' and GSA member agencies websites, and speak with their member agency representative. He added that the GSAs are releasing chapters of the GSP for public review and comment as they are developed. Mr. Renfrow noted that the City of Oakdale also has regular meetings that the public attend.

**MODESTO SUBBASIN  
OFFICE HOURS #3  
Wednesday, August 25, 2021 (5:30 p.m. – 6:30 p.m.)  
Virtual Meeting (Zoom)**

**ATTENDEES**

<b>Name</b>	<b>Agency</b>
Miguel Alvarez	City of Modesto*
Michael Riddell	City of Riverbank*
Dennis Wittchow	Members of the public
Jeff Gravel	Members of the public
John Bricchetto	Members of the public
John Davids	Members of the public
Luis Uribe	Members of the public
Terpstra Hatfield	Members of the public
Thomas Helme	Members of the public
Gordon Enas	Modesto Irrigation District*
Chad Tienken	Modesto Irrigation District*
Melissa Williams	Modesto Irrigation District*
Samantha Wookey	Modesto Irrigation District*
Eric Thorburn	Oakdale Irrigation District*
Walt Ward	Stanislaus County*
Khandria Clark	Stantec*
Kirsten Pringle	Stantec*
Phyllis Stanin	Todd Groundwater*
N/A	Unknown Callers

\* This indicates that the agency is a member agency of the Stanislaus and Tuolumne Rivers Groundwater Basin Association Groundwater Sustainability Agency, Tuolumne County Groundwater Sustainability Agency, or consultant staff.

**PURPOSE AND FORMAT**

In August 2021, the Stanislaus and Tuolumne Rivers Groundwater Basin Association (STRGBA) Groundwater Sustainability Agency (GSA) held the third in a series of basin Office Hours. Office Hours are a public engagement activity focused on soliciting questions from and engaging in informal dialogue with members of the public about key topics related to implementation of the Sustainable Groundwater Management Act and the Groundwater Sustainability Plan (GSP) being developed for the Modesto Subbasin.

The third Office Hours was held on August 25, 2021, from 5:30 p.m. – 6:30 p.m. via Zoom. At least seven individuals attended, apart from GSA and consultant staff (see the attendee list above for more details). The activity was promoted using a bilingual (English and Spanish) flyer that was distributed via the STRGBA GSA's website and social media accounts and an email to the Modesto Subbasin interested parties database.

STRGBA GSA and consultant staff provided a presentation on groundwater monitoring well networks and an update on development of the GSP. This was followed by a live question and answer session facilitated by Stantec staff. Participants could submit questions verbally or using the chat function within

the Zoom platform. Michael Riddell, City of Riverbank; Walt Ward, Stanislaus County; and Phyllis Stanin, Todd Groundwater (technical consultant preparing the GSP) were the main speakers and responded to questions from the participants. A summary of the questions and responses is provided below. A recording of the Office Hours was also made publicly available and posted on the STRGBA website.

## **SUMMARY OF FEEDBACK**

The following is a summary of attendee questions and GSA representative responses from the third Office Hours. The questions and responses are organized by the topic that they address.

### *Groundwater Monitoring Well Networks*

Mr. Ward commented on the significance of the monitoring well network. He stated that the network will help the STRGBA GSA evaluate its progress towards meeting the goals identified in the GSP. He added that having a good geographic distribution of wells allows the GSA to collect a range of information and invited members of the public to reach out to the STRGBA GSA if they know of a well that may be of use in the monitoring well networks or have data to share.

Kirsten Pringle, Stantec, asked if private wells could be included in the monitoring well network. Mr. Ward replied that a private well could be included in the network, but the well must meet certain screening criteria and provide the type of data that would be useful for the GSA's purposes. Ms. Stanin added that if a private well were to be included in the monitoring network it would (1) have to be an inactive, non-pumping well, (2) the owner would need to provide certain information about the well, and (3) the GSA would need access to monitor the well. To include a well in the monitoring network, the GSA would need to know the well's construction and screen information, well diameter, and any other available details regarding the well's internal structure. The GSA would also like to know if there is any static water level data available from the historical record and what the vertical and horizontal distribution is.

Ms. Pringle asked how installation, operation, and maintenance of the new monitoring wells was paid for. Ms. Stanin replied that the STRGBA GSA was able to secure a one-million-dollar Proposition 68 grant administered by the California Department of Water Resources (DWR). She stated that Miguel Alvarez, City of Modesto, led the application development and worked with underrepresented communities in the Subbasin to identify potential well locations. Mr. Ward added that all of the new monitoring wells have been fully permitted through Stanislaus County. Construction on the new wells has been fully completed and data is ready to be collected. Well maintenance and staff time dedicated to the wells will be the responsibility of the agency with jurisdiction over the well's location. The GSAs have yet to contract with a water quality lab to analyze any data collected from the wells, but it is a factor that will be discussed at a later date.

Ms. Pringle asked if and how the public would be given access to the data collected from the monitoring well network. Ms. Stanin replied that the information would be made available through the annual reports and five-year GSP updates submitted to DWR. The monitoring data may also be made available in the future through DWR's SGMA Portal.

John Davids, member of the public, asked what the process would be like if new wells were to be added to the monitoring well network through private landowners or additional funding. Ms. Stanin replied that the GSA is able to add new wells to the monitoring network any time after the GSP has been adopted. If a



well was added, the GSA would notify DWR of this change via the annual reports and five-year GSP updates. She noted that one of the potential management actions for the Modesto Subbasin is to improve the monitoring network to fill data gap. Ms. Stanin reiterated Mr. Ward's previous call for information on wells that could be included in the monitoring well network and stated that while the GSA will continue to strategize on the matter, they encourage the public to reach out if anyone knows of wells that may fit the GSA's needs.

#### *Projects and Management Actions*

Dennis Wittchow, member of the public, asked how the public could view projects and management actions that are being considered by the GSA. Ms. Stanin responded that a preliminary list of projects had been presented at a previous meeting. This list included projects related to stormwater recharge and water supply located in urban areas. The project details are still being developed and the potential benefits are being analyzed using the groundwater model. The preliminary list of management actions hasn't been released. The STRGBA GSA will be discussing the draft list of projects and management actions at the STRGBA GSA Committee and Technical Advisory Committee meetings being held in September.

#### *Annual Reports*

Mr. Ward commented that the annual reports should be utilized as an opportunity for the STRGBA GSA to measure its performance and adapt to changing conditions in the Subbasin. Michael Riddell, City of Riverbank, added that the annual report and groundwater monitoring network are tools for the STRGBA GSA to manage the Subbasin's groundwater resources.



**Stanislaus & Tuolumne Rivers Groundwater Basin Association  
Groundwater Sustainability Agency**

1231 11<sup>th</sup> Street | Modesto, CA 95354

Phone: (209) 847-0341

Email: [strgba@mid.org](mailto:strgba@mid.org)

August 10, 2021

Modesto Irrigation District  
Board of Directors  
1231 11<sup>th</sup> Street  
Modesto, CA 95354

**Re: Notice of Intent to Adopt a Groundwater Sustainability Plan**

Dear Board of Directors:

On behalf of the local agencies comprising the Stanislaus and Tuolumne Rivers Groundwater Basin Association Groundwater Sustainability Agency (STRGBA GSA), pursuant to California Water Code Section 10728.4, the STRGBA GSA hereby gives notice to the legislative body of any City, County, or Public Utilities Commission-regulated company within the geographic area covered by the pending Modesto Subbasin Groundwater Sustainability Plan (GSP) of its intent to adopt the GSP for the Modesto Subbasin (DWR Basin 5-22.02). A map of the area covered by the GSP is included herein.

Interested parties may provide comments on the Public Draft GSP during the scheduled public comment period, September 1 through October 31, 2021. Information regarding the Draft GSP has been posted on the STRGBA GSA website at [www.strgba.org](http://www.strgba.org). According to Water Code Section 10728.4, "a groundwater sustainability agency may adopt or amend a groundwater sustainability plan after a public hearing, held at least 90 days after providing notice to a city or county within the area of the proposed plan or amendment. The groundwater sustainability agency shall review and consider comments from any city or county that receives notice pursuant to this section and shall consult with a city or county that requests consultation within 30 days of receipt of the notice."

No sooner than 90 days from the date of this Notice, the STRGBA GSA will hold a public hearing and consider adopting the GSP. For meeting information and public hearing dates, please refer to the STRGBA GSA website.

Should you have any questions about this, please contact me by email at [strgba@mid.org](mailto:strgba@mid.org) or by phone at (209) 847-0341.



**Stanislaus & Tuolumne Rivers Groundwater Basin Association**  
**Groundwater Sustainability Agency**  
1231 11<sup>th</sup> Street | Modesto, CA 95354  
Phone: (209) 847-0341  
Email: [strgba@mid.org](mailto:strgba@mid.org)

Sincerely,

Eric Thorburn, P.E.  
STRGBA GSA Chairman

Enclosure: GSA Modesto Subbasin Map

# Modesto Subbasin Agencies

